

two-hand operation console for command devices, 22 mm, round, enclosure material plastic, enclosure top part gray, 3 holes for command points, 8 additional preset breaking points for 22 mm command devices, 2 mushroom pushbuttons black 40 mm, 2x1NO+1NC, screw terminal, 1 EMERGENCY STOP red, 40 mm, 2 NC, screw terminal, front mounting, with cable cut-outs for metric screw connections



product brand name	SIRIUS ACT
product designation	Two-hand operation console
product type designation	3SU1
manufacturer's article number	
<ul style="list-style-type: none"> of supplied contact module of supplied contact module at the command point A 1 of supplied contact module at the command point A 3 of supplied contact module at the command point B 1 of supplied contact module at the command point B 3 of supplied contact module at the command point C 1 of supplied contact module at the command point C 3 of the supplied holder at the command point A of the supplied holder at the command point B of the supplied holder at the command point C of the supplied actuator at the command point A of the supplied actuator at the command point B of the supplied actuator at the command point C of supplied empty enclosure of the supplied accessories at the command point B 	<p>R2 = 3SU1400-1AA10-1BA0 / L2 = 3SU1400-1AA10-1BA0 / M1 = 3SU1400-1AA10-1CA0 / R1 = 3SU1400-1AA10-1CA0 / L1 = 3SU1400-1AA10-1CA0 / M2 = 3SU1400-1AA10-1CA0</p> <p>3SU1400-1AA10-1CA0</p> <p>3SU1400-1AA10-1BA0</p> <p>3SU1400-1AA10-1CA0</p> <p>3SU1400-1AA10-1CA0</p> <p>3SU1400-1AA10-1CA0</p> <p>3SU1400-1AA10-1BA0</p> <p>3SU1550-0AA10-0AA0</p> <p>3SU1550-0AA10-0AA0</p> <p>3SU1550-0AA10-0AA0</p> <p>3SU1000-1BD10-0AA0</p> <p>3SU1000-1HB20-0AA0</p> <p>3SU1000-1BD10-0AA0</p> <p>3SU1803-3AA00-0AA1</p> <p>3SU1900-0BB31-0AT0</p>
Enclosure	
design of the housing	Two-hand operating console with standard components
material of the enclosure	plastic
number of command points	3
color of the enclosure top part	grey
delivery state	
<ul style="list-style-type: none"> as a kit pre-wired on strip terminal 	<p>No</p> <p>No</p>
fastening method of the enclosure	Horizontal
Actuator	
design of the actuating element	A = mushroom pushbutton / B = EMERGENCY STOP mushroom pushbutton / C = mushroom pushbutton
principle of operation of the actuating element	A = momentary contact / B = latching / C = momentary contact
product feature	
<ul style="list-style-type: none"> lockout staggered switching 	<p>No</p> <p>No</p>
color of the actuating element	A = black / B = red / C = black
material of the actuating element	plastic
shape of the actuating element	round
number of contact modules	6

type of unlocking device	A = none / B = rotate to unlock / C = none
Front ring	
product component front ring	Yes
material of the front ring	plastic
color of the front ring	black
Holder	
material of the holder	Plastic
General technical data	
product function	
• positive opening	Yes
• EMERGENCY OFF function	Yes
• EMERGENCY STOP function	Yes
product component stand/pedestal	No
protection class IP	IP66
degree of protection NEMA rating	1, 4X, 12K, indoor use only, 13
shock resistance according to IEC 60068-2-27	sinusoidal half-wave 15g / 11 ms
vibration resistance according to IEC 60068-2-6	10 ... 500 Hz: 5g
reference code according to IEC 81346-2	S
continuous current of the C characteristic MCB	10 A; for a short-circuit current smaller than 400 A
continuous current of the quick DIAZED fuse link	10 A
continuous current of the DIAZED fuse link gG	10 A
Substance Prohibitance (Date)	10/01/2014
Weight	2.3 kg
Auxiliary circuit	
design of the contact of auxiliary contacts	Silver alloy
number of NC contacts for auxiliary contacts	4
number of NO contacts for auxiliary contacts	2
Connections/ Terminals	
type of electrical connection on enclosure	Cable routing at the rear 2 x M25
Safety related data	
proportion of dangerous failures	
• with low demand rate according to SN 31920	20 %
• with high demand rate according to SN 31920	20 %
B10 value with high demand rate according to SN 31920	100 000
failure rate [FIT] with low demand rate according to SN 31920	100 FIT
IEC 61508	
T1 value for proof test interval or service life according to IEC 61508	20 a
Ambient conditions	
ambient temperature	
• during operation	-25 ... +70 °C
• during storage	-40 ... +80 °C
environmental category during operation according to IEC 60721	3M6, 3S2, 3B2, 3C3, 3K6 (with relative air humidity of 10 ... 95%, no condensation in operation permitted for all devices behind front panel)
Environmental footprint	
Environmental Product Declaration(EPD)	Yes
Global Warming Potential [CO2 eq] total	0.787 kg
Global Warming Potential [CO2 eq] during manufacturing	0.566 kg
Global Warming Potential [CO2 eq] during operation	0.235 kg
Global Warming Potential [CO2 eq] after end of life	-0.015 kg
Installation/ mounting/ dimensions	
fastening method of modules and accessories	Front plate mounting
height	185.3 mm
width	469.2 mm
depth	137.4 mm
Accessories	
number of backing plates	1
marking of backing plate	NOT-HALT
color of backing plate	Yellow
Approvals Certificates	

General Product Approval



[Confirmation](#)



General Product Approval

Test Certificates

other

Environment



[Type Test Certificates/Test Report](#)

[Special Test Certificate](#)

[Confirmation](#)



Environment

Siemens
EcoTech



[Environmental Confirmations](#)

Further information

Information on the packaging

<https://support.industry.siemens.com/cs/ww/en/view/109813875>

Information- and Downloadcenter (Catalogs, Brochures,...)

<https://www.siemens.com/ic10>

Industry Mall (Online ordering system)

<https://mall.industry.siemens.com/mall/en/en/Catalog/product?mlfb=3SU1803-3NB00-1AE1>

Cax online generator

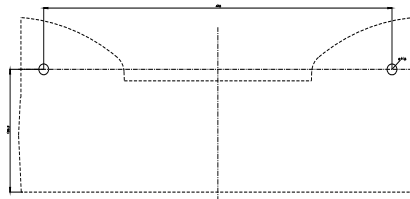
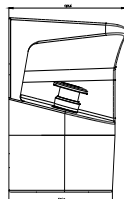
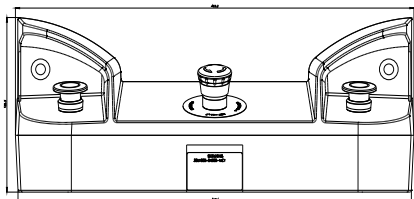
<http://support.automation.siemens.com/WW/CAXorder/default.aspx?lang=en&mlfb=3SU1803-3NB00-1AE1>

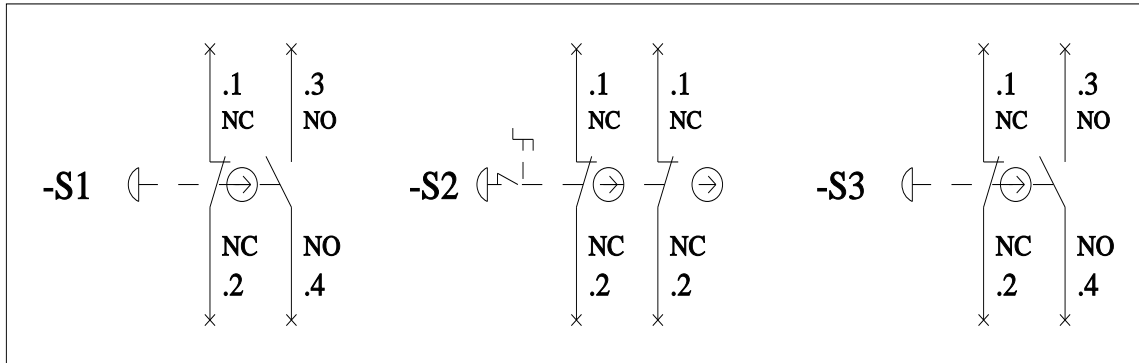
Service&Support (Manuals, Certificates, Characteristics, FAQs,...)

<https://support.industry.siemens.com/cs/ww/en/ps/3SU1803-3NB00-1AE1>

Image database (product images, 2D dimension drawings, 3D models, device circuit diagrams, EPLAN macros, ...)

http://www.automation.siemens.com/bilddb/cax_de.aspx?mlfb=3SU1803-3NB00-1AE1&lang=en





last modified:

3/4/2024