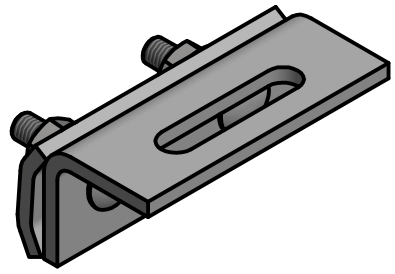
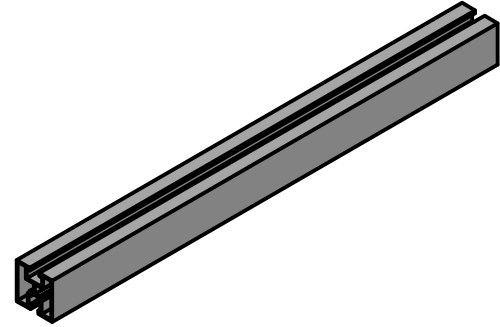


# Installation instructions for adjustable mounting bracket

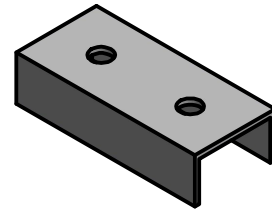
## Elements required



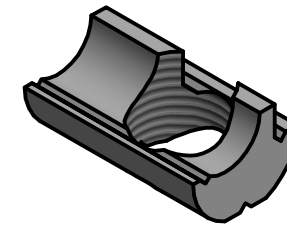
**1. Large triangle**  
(cat. no.60165-15/60165-35)



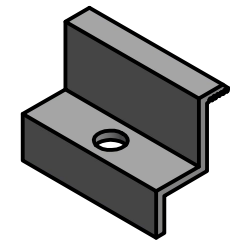
**2. Mounting profile**  
(cat. no. 34207-34414)



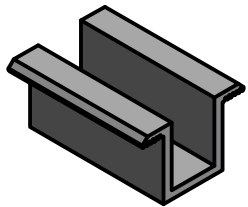
**3. C120 connector**  
(cat. no. 50120)



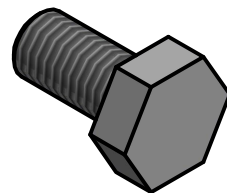
**4. Inlet with ball**  
(cat. no.50032)



**5. End clamp**  
(cat. no.10ZXX/10ZXXR)Ø



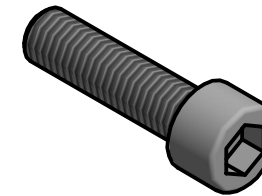
**6. Middle clamp**  
(cat. no.10U24/10U24R)



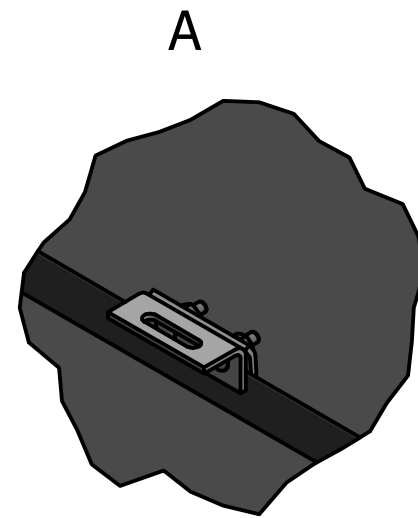
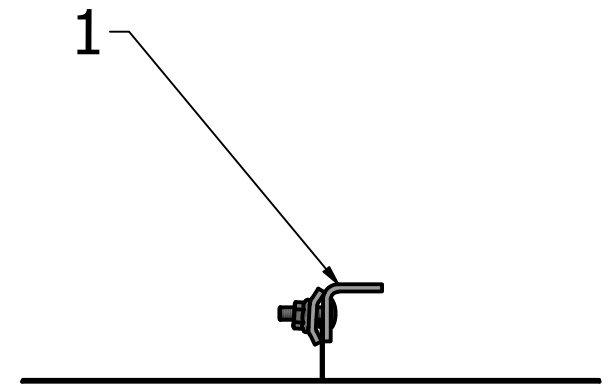
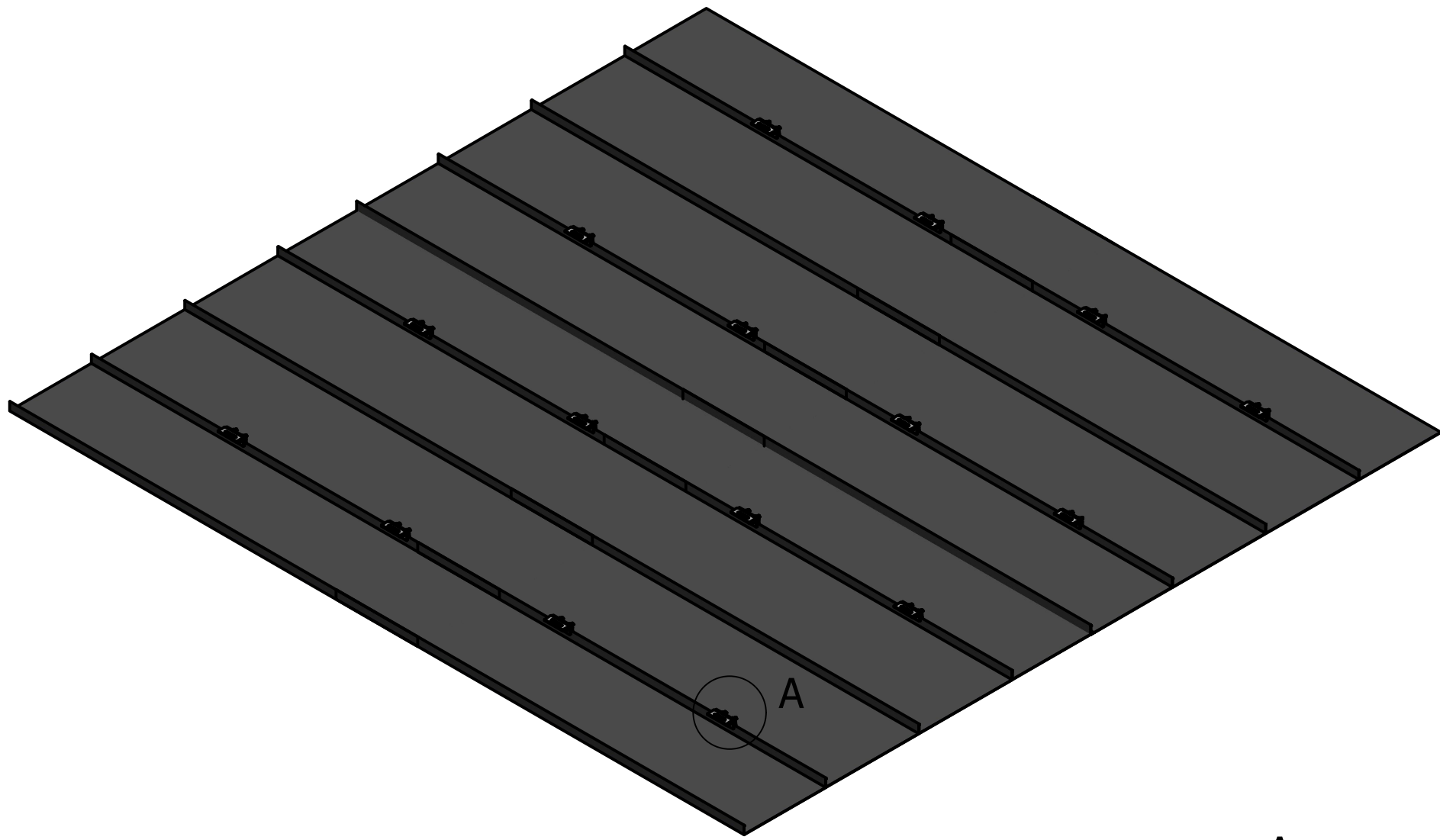
**7. Hexagonal screw**  
M10x20 (cat. no.50120)



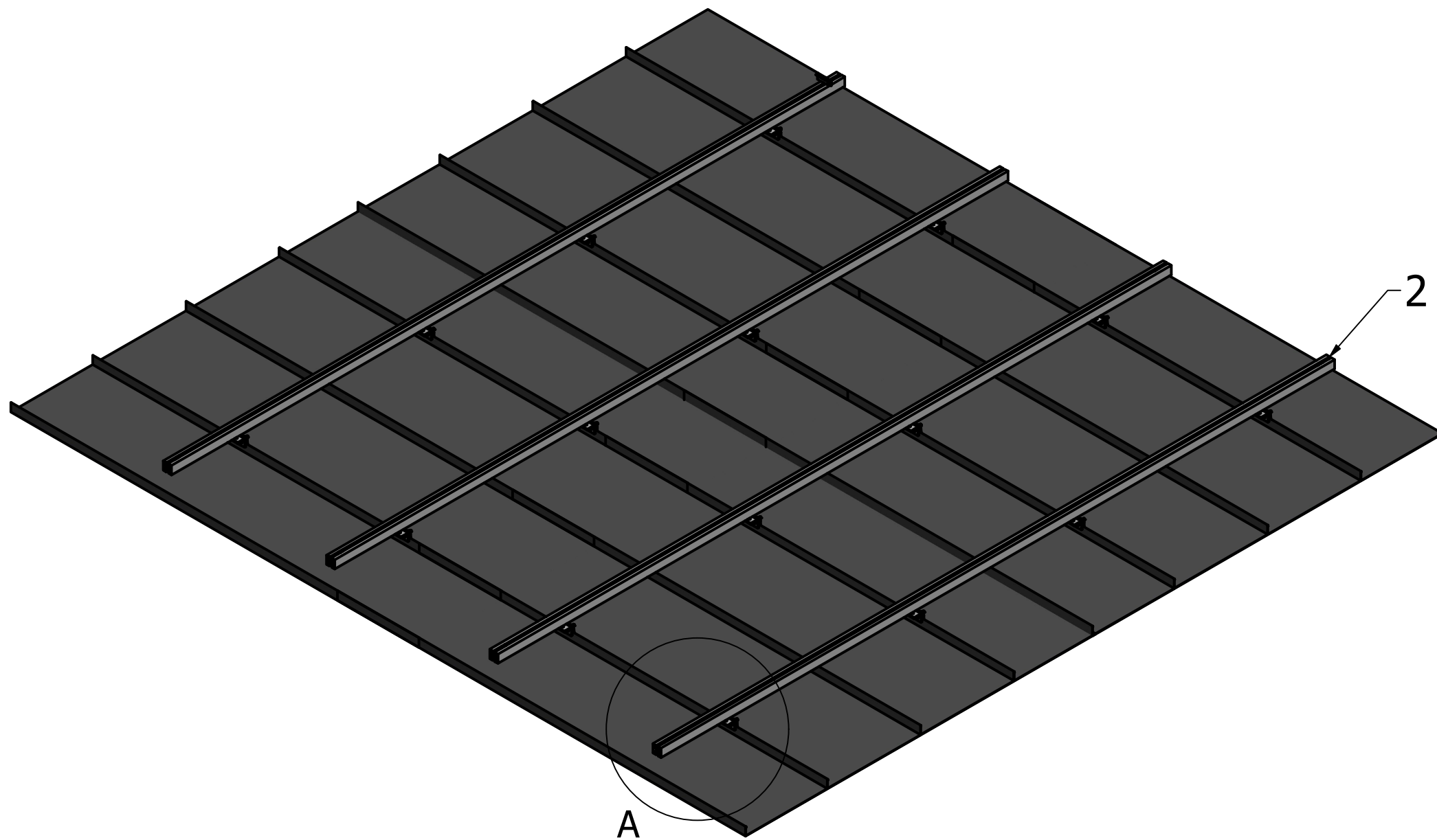
**8. Flange nut**  
M10(cat. no.5010K)



**9. Allen screw**  
M8 (cat. no.50816-50830)

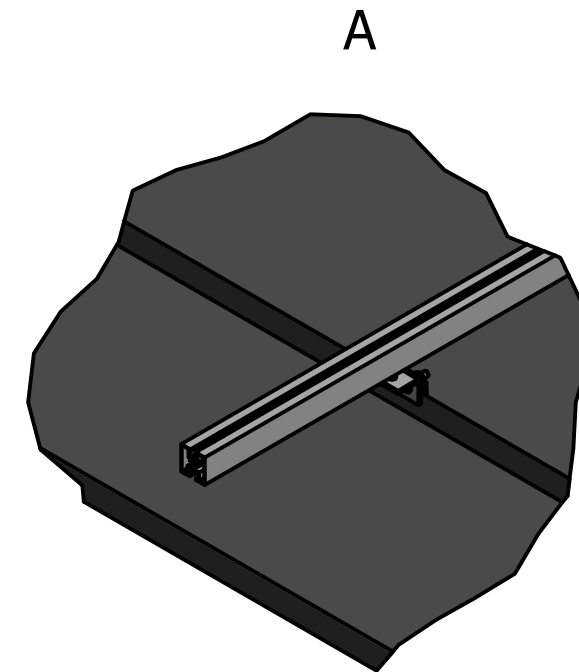


First, plan the placement of the seam bracket. Once the brackets are positioned correctly, tighten them with the bolts.



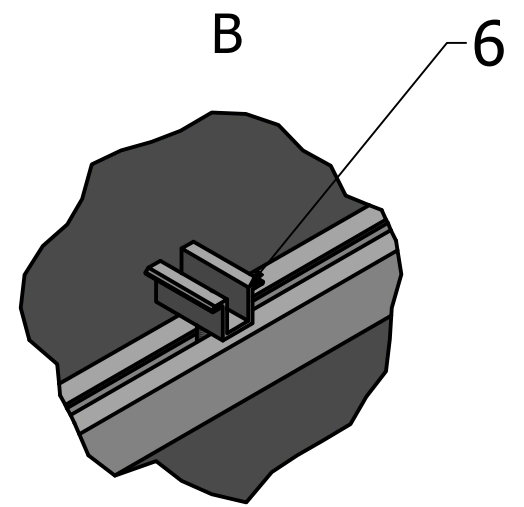
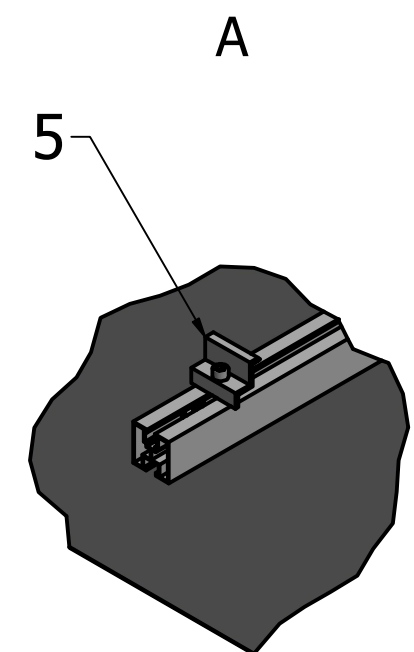
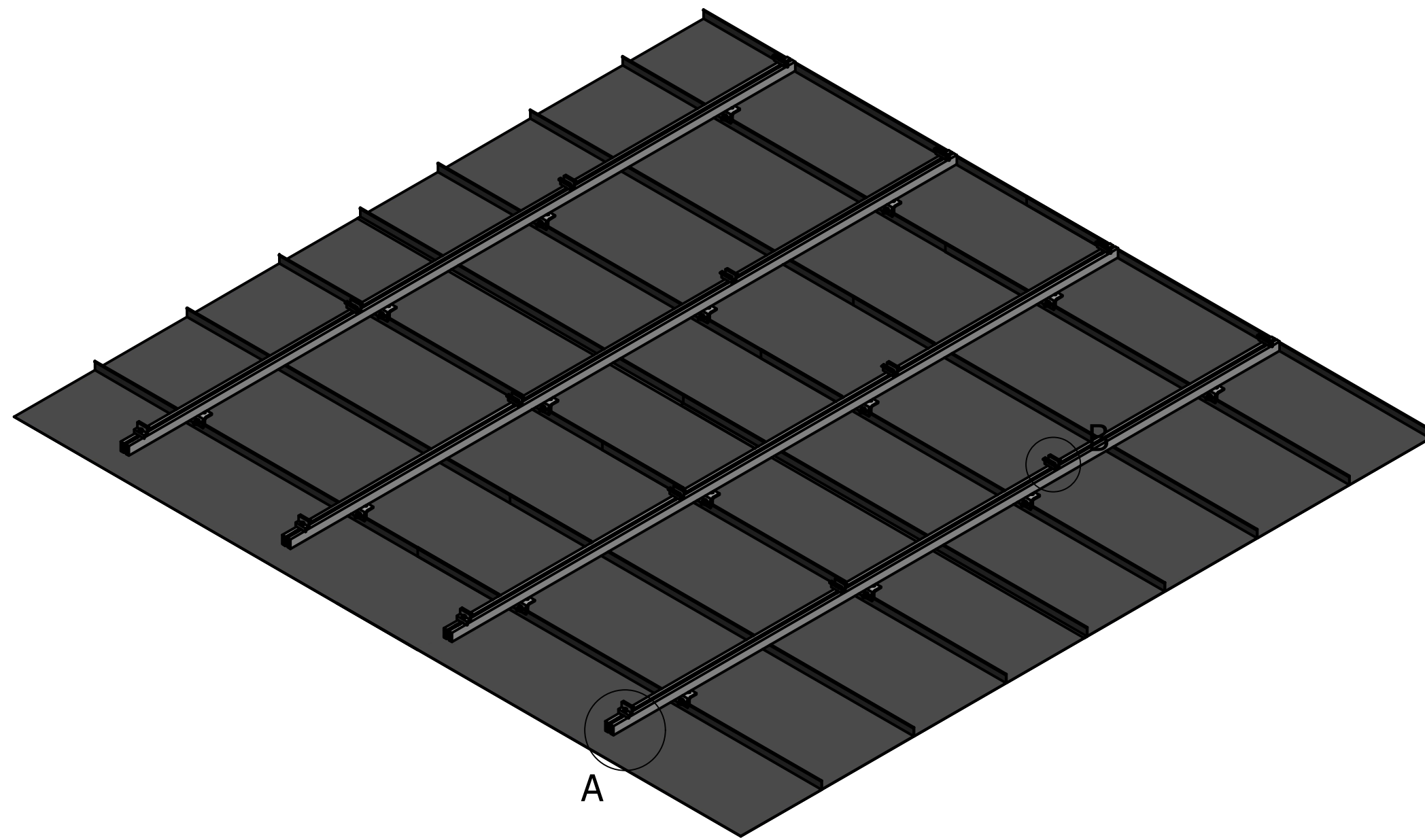
2

A



A

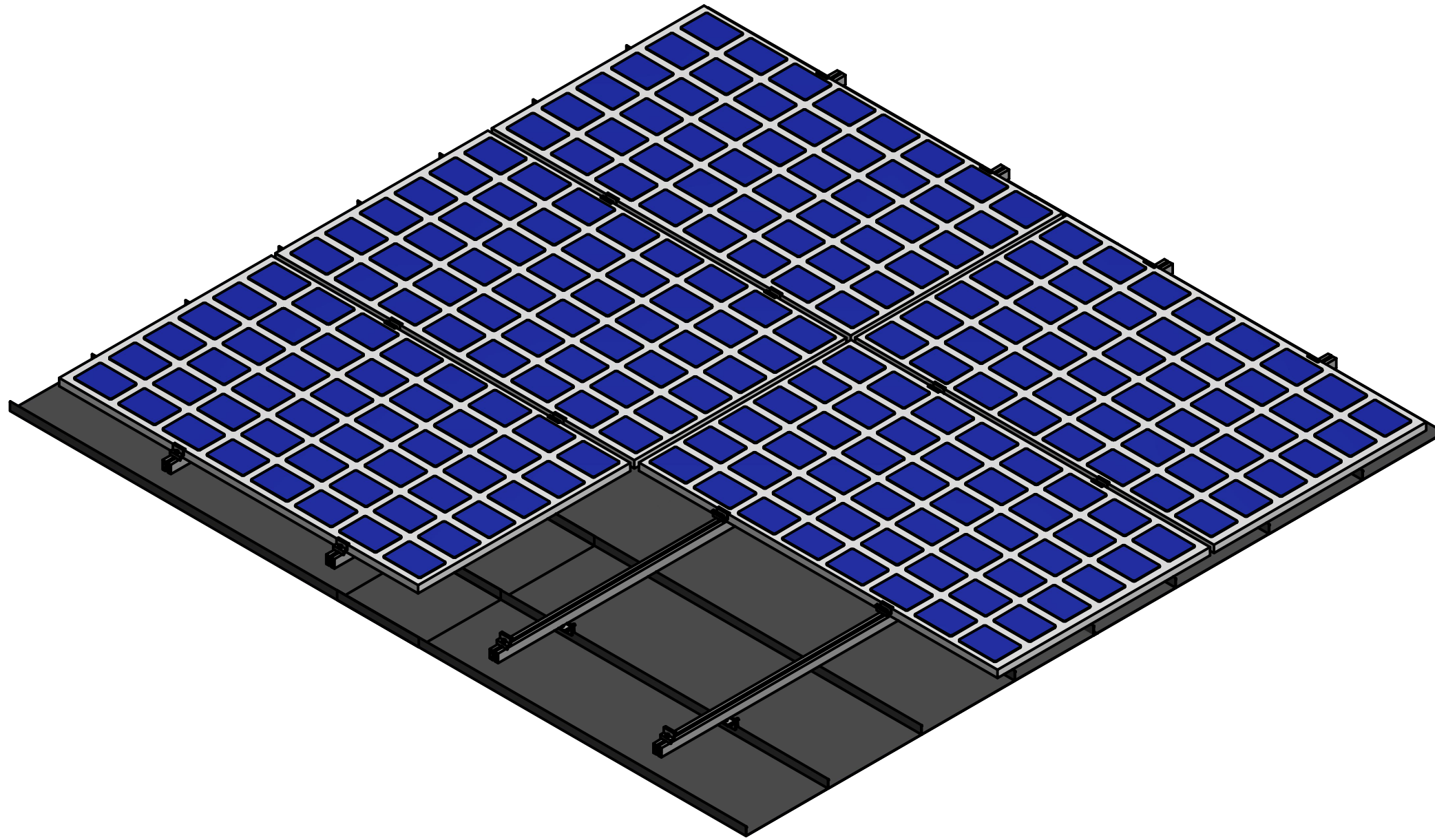
The mounting profiles are bolted to the brackets using hexagonal bolts M10x20 (cat.no. 50120) and flange nuts M10 (cat. no.5010K)



To the aluminum drain that is placed on the profiles, fix the metal end clamps (cat. no. 10XX/10ZXXR) using the allen bolt M8\*\* (they need to be screwed into the aluminum drain), remember to do not screw them too hard as due to the need to change the module.

The blank drains will be occupied by the mid clamp (cat. no.10U24/10U24R), thanks to them two adjacent modules are separated from each other.

**\*-"XX" is the clamp height in millimeters (25,30,32,35,40)mm, R is the clamp height in black.**  
**\*\*-Thread length for Allen screw M8 (16,20,25,30)mm.**



In the last step, deploy the modules on the structure,  
set them properly and then screw the mid clamps and end clamps.