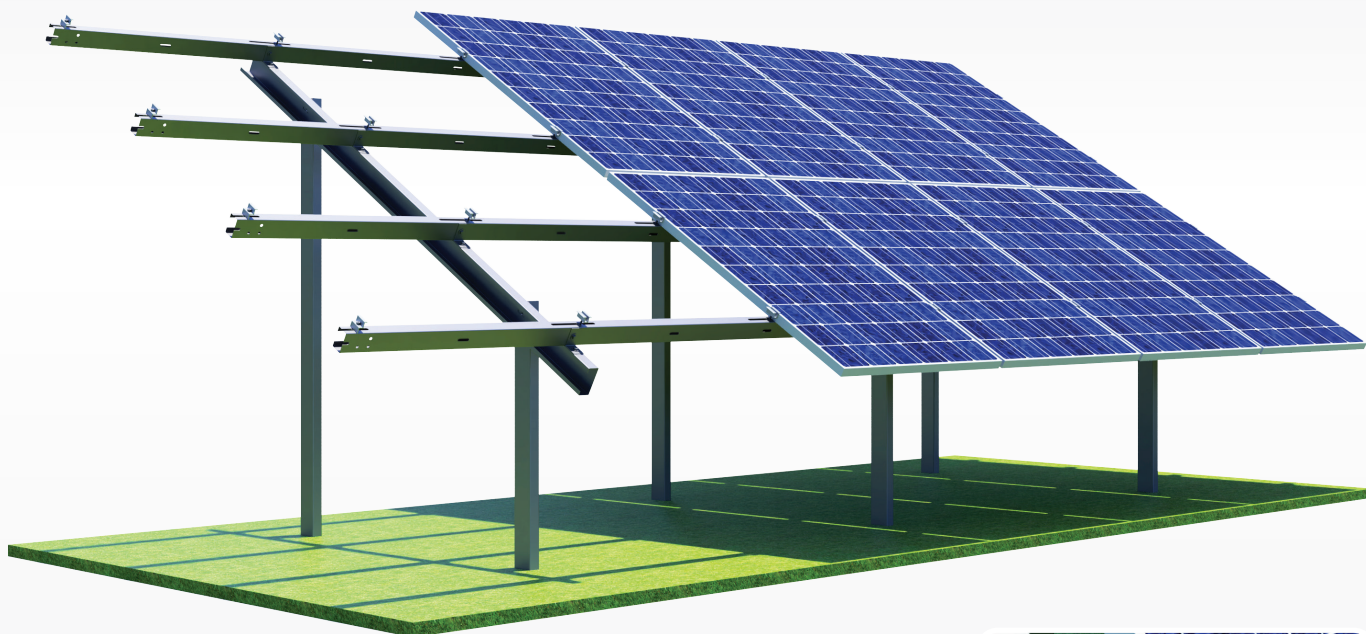


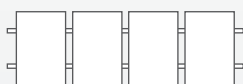
KONSTRUKCJA NAZIEMNA / GROUND MOUNTED

# SYSTEM KN-PI01



## Układ paneli / Modules layout:

Pionowy  
Vertical

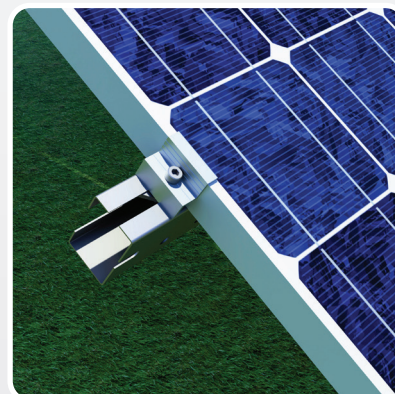
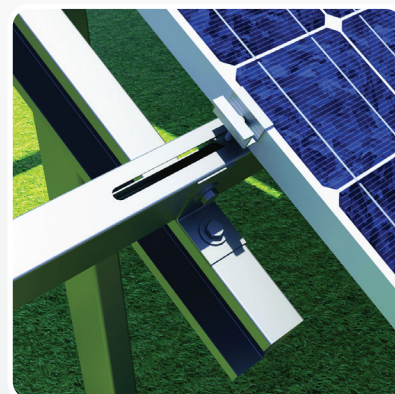


## Dodatki / Accessories:


Klemy końcowe czarne  
Black end clamps




Klemy środkowe czarne  
Black middle clamps



# Magnelis®


 **Materiał / Material:**  
Aluminium / Aluminum  
Stal nierdzewna / Stainless steel  
Magnelis / Magnelis

 **Spełniane normy / Standards:**  
PB-TUV-78:2012  
PN-EN 1991-1-3:2005  
PN-EN 1991-1-4:2008

 **Waga systemu dla 8 modułów**  
System weight for 8 modules:  
118,71 kg

 **Gwarancja / Guarantee:**  
10 lat / 10 years

 **Kąt nachylenia systemu**  
Angle of the system:  
25°, 30°

 **Montaż / Installation:**  
Wbijanie w grunt  
Rammed into the ground